



PUBLIC WEBINAR 06/09/2017

Invitation to S2R JU Associated Members to submit an answer in view of the realignment of their activities and additional commitment to the S2R Programme

Carlo M Borghini, Executive Director

**PUBLIC-PRIVATE PARTNERSHIP
R&I PLATFORM FOR RAIL
WORKING TOGETHER
DRIVE INNOVATION
BY 2024**



**COST
EFFICIENCY**
50% reduction of life-cycle costs
of the railway transport system



CAPACITY
100% increase in capacity



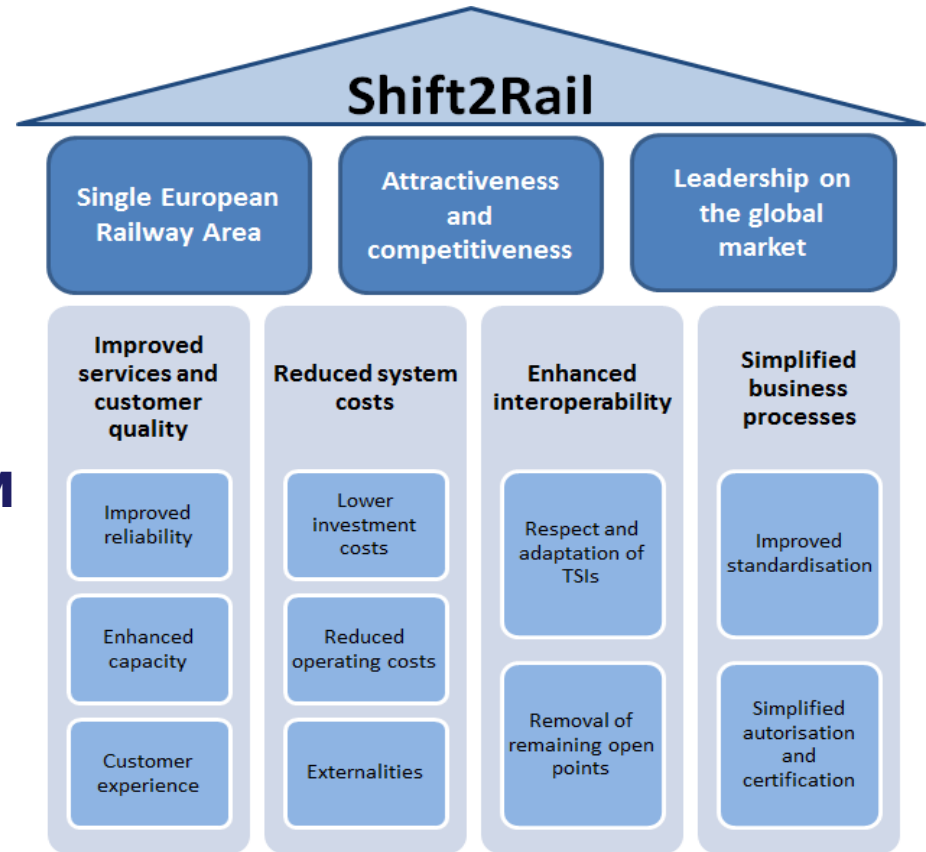
**OPERATIONAL
EFFICIENCY**
50% increase in reliability
and punctuality



**SINGLE EUROPEAN
RAILWAY AREA**

**ATTRACTIVENESS &
COMPETITIVENESS OF THE
EUROPEAN RAILWAY SYSTEM**

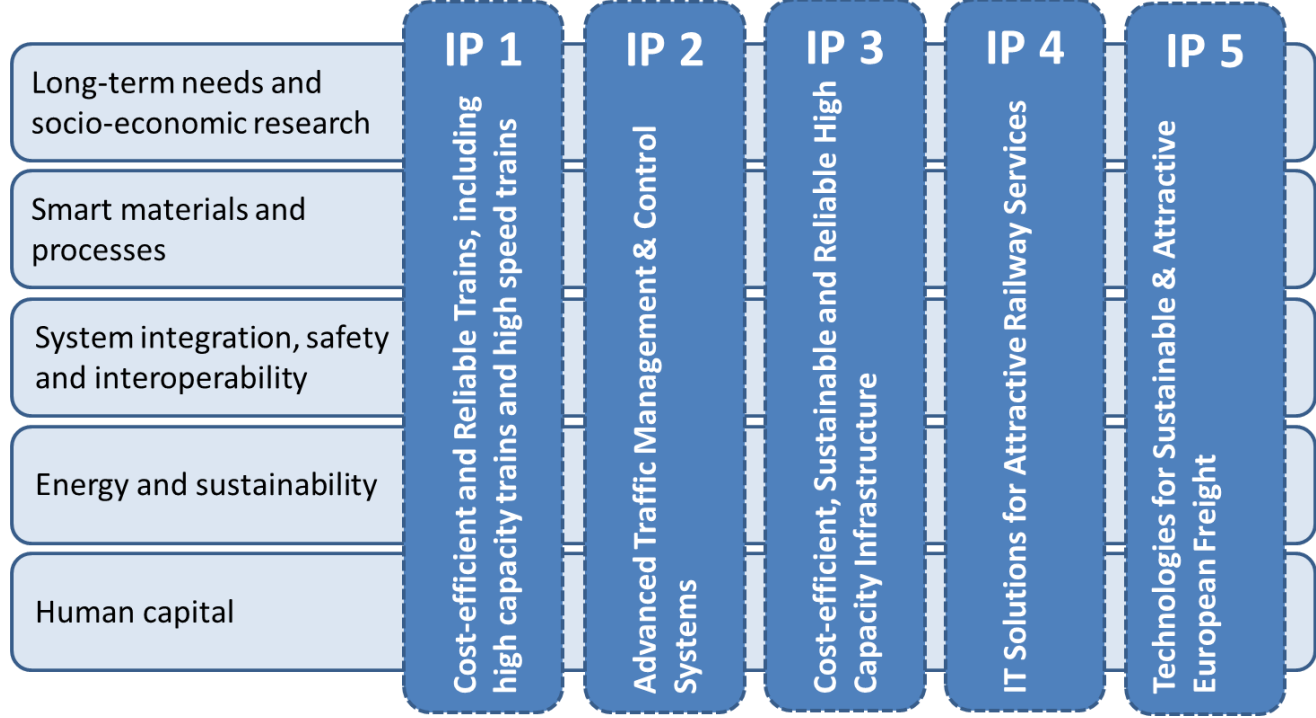
**LEADERSHIP ON THE
GLOBAL MARKET**



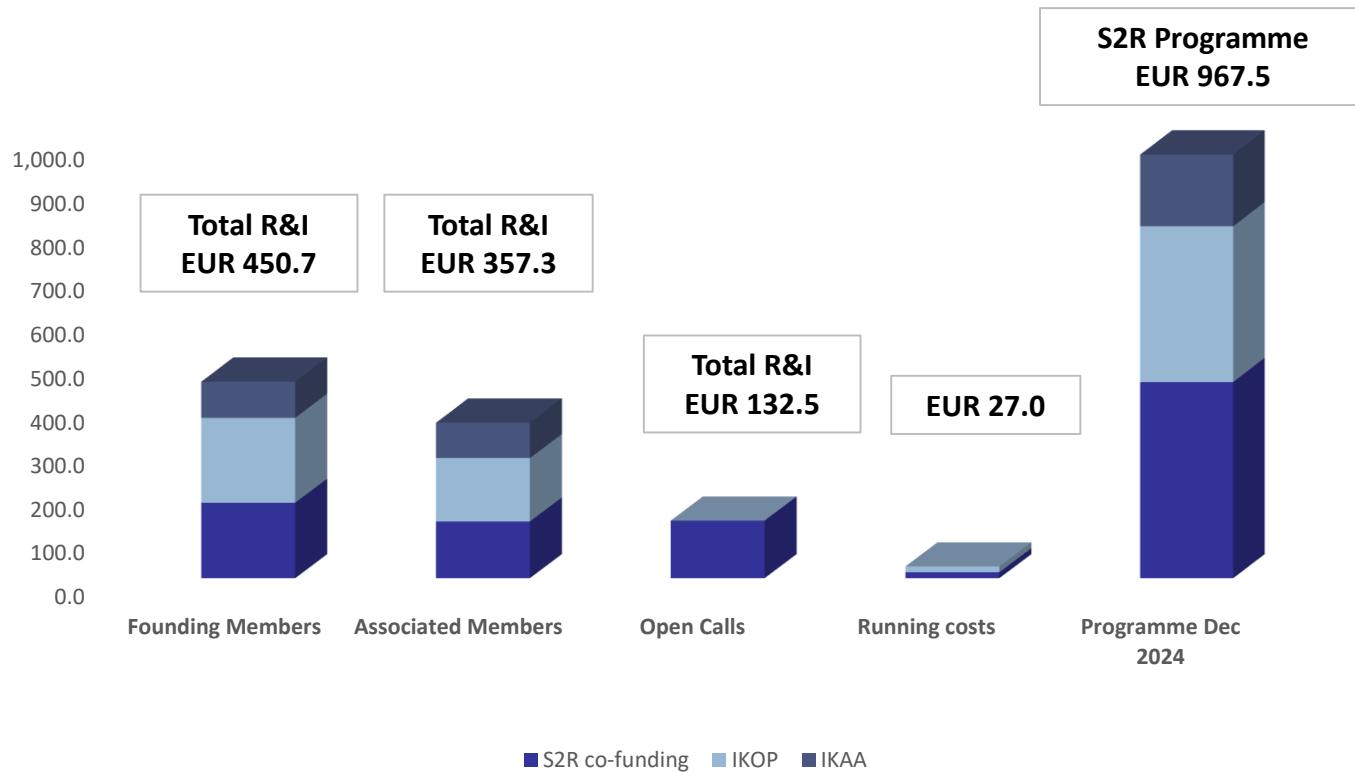
S2R PROGRAMME: A NEW APPROACH TO R&I IN RAILWAY



**S2R PROGRAMME:
INTEGRATED
CONSISTENT
DELIVERY ORIENTED**



PROGRAMME IN FIGURES



Thank you

